

LITTLE CHALFONT PARISH COUNCIL

Newsletter - Spring 2022



Speeding drivers menace

New device shows nearly 40% exceeding speed limit

The parish council was pleased to be able to purchase two brand new MVAS (movable vehicle activation signs) recently to more accurately measure the speed of drivers on our village roads.

Speeding drivers in our village are becoming more and more of a problem and we need to be able to more record the speed of vehicles so that we can focus resources on those black spots to try to alleviate the problem.

First signs in Cokes Lane

The new signs were first positioned in the section of Cokes Lane between the junction with Harewood Road and the mini roundabout in both directions where **the speed limit is 30mph**. The MVASs were in position for a period of six weeks during December 2021 and January 2022.

The figures just analysed from the devices show a shocking lack of consideration by a great many drivers, along **Cokes Lane**.

For example, for a single week in mid December 2021, the figures were as follows:

- a total of 23,740 vehicles were recorded travelling into the village, of which 19% were travelling at 35-60 mph;

- a total of 25,641 vehicles were recorded coming from the village, of which a **massive 39% were travelling at 35-75 mph**.

The signs were then moved to **Bell Lane** for six weeks from January to February 2022, for which the figures were as follows:

- a total of 5,719 vehicles were recorded travelling towards the White Lion Road, of which 15.7% were travelling at 35-50 mph;



Cokes Lane, above, heading towards Harewood Road, where the new MVAS clearly shows a driver totally ignoring the warning to SLOW DOWN!

- a total of 15,080 vehicles were recorded travelling away from the White Lion Road, of which less than 1% were speeding.

Elizabeth Avenue will be next

We have had numerous complaints about speeding drivers in Elizabeth Avenue. This, coupled with thoughtless parking that blocks the footpaths, is causing considerable danger to pedestrians who are forced to walk into the road to get around badly parked cars, only to be confronted by speeding drivers.

The MVAS will be positioned in both directions in various places along Elizabeth Avenue from March – May 2022 to gather evidence of drivers who break the speed limit.

We hope to pass on this information to the local police and ask them to increase their speed traps on our speeding black spots to try to educate drivers to think carefully about others' safety when driving – and parking! ■

You are invited to attend the

ANNUAL PARISH MEETING 2022

to be held in Little Chalfont Village Hall, Cokes Lane
on Wednesday 4 May 2022 at 7.30pm

Guest speakers:

Brian Drew, former parish council chairman, on the history of Little Chalfont

Ian Edgar, B Pharm, on the changing face of community pharmacies

There will be plenty of opportunities to ask questions of speakers and councillors at the meeting. Alternatively, you may submit your questions in writing before the meeting, or via email to clerk@littlechalfont-pc.gov.uk or post them in the letterbox next to the front door of the village hall. Please include your name and address. If you do not want your name and address made public, please state this clearly

Nature park update

Spring has sprung!

As we embrace this new season, Little Chalfont Nature Park provides a wonderful place to enjoy the spring.

A stroll in the park will reveal its flourishing fauna and habitats teeming with extraordinary wildlife. The unique meadow and woodland ecosystems are home to incredible insects, wildflowers and other awe-inspiring creatures.

The wild daffodils, pictured, were coming into full flower as we went to press. *Please don't pick them but leave them for everyone to enjoy.*

Luckily, we have had very little storm damage in the recent months.

The wildlife of the park is now blossoming again and there is so much to explore at this time of year.

This rare and unpolluted meadow is a sanctuary for wildflowers, as their grassland habitat has mostly been destroyed in the UK. Violets and dandelions, which are an early source of nectar for bees and butterflies, are some flowers that may be found in April.



While plants greet this season of growth, birds such as the long-tailed tit and the greenfinch are beginning to build their nests.

Graceful brimstone butterflies and comma butterflies – recognisable by a white comma shape on their wings – also flutter in the April breeze.

Increasingly rare butterflies seek refuge in nature reserves and are a beautiful sight to see.

To further enhance the biodiversity of the park, the installation of a new beehive is planned.

Bees are crucial to the biodiversity balance as they pollinate crops

essential for food as well as a variety of plants. Introducing them in our little corner of the world is a step towards a planet where all living things thrive.

This oasis of a park is open to all and is a special place for children to fall in love with nature for the first time and for everyone to relax and reenergise. So why not visit and stroll through the wildlife to enjoy the beauty of nature while you can. ■

From the chairman



As I look at Little Chalfont Parish today in 2022 and see a busy thriving parish in its own right, it had me thinking back to 1955 when I first arrived in Little Chalfont, and how much things have changed in those 67 years.

In those days a very rural Little Chalfont was part of the Amersham Rural District Council administration. The only local primary school was Chenies County Primary – Oakington Avenue Primary School was not yet in being and that part of Oakington Avenue was just an unmade road with woods and fields.

In 1955 there was no Chenies Parade, the only shops being near the railway station and on Nightingales Corner. Amongst the few shops were Rhodes the grocers (now Haranies), Rendezvous Newsagents (now Cube Tax Accountants), Swanell & Sly estate agents (now Robsons), Munn & Chapman (now CityGate), Station Garages (now Merityre) and next door to the telephone exchange was Statters SwitchGear (now Cytiva).

The period 1955 to 1960s was the start of change for Little Chalfont. The unmade road in Oakington Avenue was tarmacked in preparation for the new bungalows and eventually the new school.

Elizabeth Avenue between the A404 junction and Sandycroft Road remained an unmade road until about 1957 when Westwood Drive and Chalfont Avenue were being constructed. The original road entrance to the station was relocated from adjacent to the railway bridge to where it is now at Chalfont Avenue.

On page 3 of this newsletter you will find an update on our campaign to prevent building in the green belt between Lodge Lane and Burtons Lane.

After the development begun in the 1940s in Oakington Avenue, Oldfield Close and Amersham Way, the railway formed a firm boundary, of the kind planners like, between the built-up area and the green belt beyond. Over 1,000 Little Chalfont residents have sent the planning authority objections to the proposed development.

Mike Crowe

Westwood Park news

The new season kicks off!

As the spring equinox approached the park is starting to dry out and parts are now looking less of a quagmire and the football pitches have dried out (see picture).

Now that the Covid restrictions are, hopefully, behind us it is nice



to see a return to a degree of normality. There has been a noticeable increase in the number of visitors who appear to have discovered all that Westwood Park has to offer.

As ever we have a busy agenda for the park over the coming year that will include alterations to the pavilion, repairs to the car park surface, refurbishment of the multi-use games area (MUGA). We will update you on these initiatives in future newsletters.

Keen walkers will have noticed the work in the woods through the winter, part of an ongoing maintenance programme to stimulate new growth at ground level. ■

Little Chalfont Farmers Market

For the spring/summer 2022, the farmers market will be held in the village hall car park from 9am-1pm:

Saturday 14 May
Saturday 11 June
Saturday 9 July
Saturday 13 August

If you are interested in taking a stall at the farmers market, please contact the organiser at info@tvfm.org.uk or call 01895 677455.

For the craft fair please contact Jan Purcell at jan.pursall@ntworld.com

Threat to our green belt

An update

In January 2022 the parish council and the community association submitted their joint objection to a developer's planning application to build up to 380 homes, a 100-unit retirement village, a 60-bed care home and community facilities on green belt land between Burtons Lane and Lodge Lane.

In our view the proposals would breach green belt policy, use completely unsuitable rural lanes for access, harm valued landscape and ecology, add to congestion in the village, and overload local services.

Our objection went into necessary detail, and was accompanied by professional reports that we had commissioned on highways/access, landscape, and ecology, all three strongly supporting our case.

There is evidence from comments published on Bucks Council's planning website by their internal experts – for example in the comments of the highways and ecology departments – that they have considered and taken account of our case.

1,085 Little Chalfont residents submitted their own objections to the proposals. In February 2022 the developer sent further information to Bucks Council on environmental aspects of the application. We then submitted comments reinforcing our



The green belt site proposed for development (boundaries shown approximate), and the ancient woodland affected.

objection on those issues, accompanied by a further professional report challenging the claims made on ecology.

It is too early to predict the likely outcome of this planning application.

Buckinghamshire councillors will take a decision on the application at the meeting of their Strategic Sites Committee on 21 April. By the time you read this, the decision should be known.

The council's planning officers have recommended refusal of the application, on grounds including harm to the green belt, to landscape, and to ecology, and insufficient information on some other topics such as highways impact.

If the committee decides to refuse the application, the applicant can appeal to the government's planning inspectorate.

Our website savelittlechalfont.org.uk will keep residents informed. ■

Briefly...

Village hall users

The various groups that use the village hall regularly for meetings etc will be glad to know that the parish council has now installed a card payment machine to enable the hiring costs to be paid by credit or debit card instead of cash.

Action for Ukraine appeal

An auction is being planned, where it is hoped that people could donate items that could be sold and all profits handed to one of the Ukraine aid agencies. The planned date for Little Chalfont is, hopefully, 28 May 2022.

To make this work, a small group of volunteers is required. It would be especially helpful if someone with specialist knowledge, perhaps a retired auctioneer, could be part of this team. This initiative requires considerable planning and some hard work, but if you would like to be part of what should be a worthwhile exercise, please email lcukraine@virginmedia.com or phone Brian Drew on 07711 293774.



Cytiva front car park

Now that working practices are getting back to near normal, Cytiva needs the front car park during the week for its employees.

However, you will be glad to note that the car park is still available to local residents at the busiest time of the week - namely Saturday and Sunday, for two hours' free parking from 8am to 6pm.

Dangerous corner tackled

Cokes/Nightingales Lane

There have been several accidents on the corner of Cokes Lane with Nightingales Lane over the years, most likely caused by drivers going too fast to negotiate the sharp bend or under the influence of drink or drugs.

Transport for Bucks (TfB) has addressed this issue by installing anti-skid surfaces in both directions at the corner and on the part of Cokes Lane from the golf course joining the junction.

In addition, new chevron signs in distinctive black and yellow colouring

were installed to replace the ones that were demolished in accidents on the bend over the years, along with bright white 'slow' signs on a red background painted in the road on both approaches to the corner.

The dangerous corner signs have also been replaced with



New 'slow' signs and corner warning signs (above) and anti-skid surfaces and new chevrons on Cokes/Nightingales corner (right)

much more noticeable ones.

It is hoped that all these measures combined will make this corner safer for drivers and pedestrians alike. ■

Self defence for women

First scheme held in Little Chalfont

In the current climate with a heavy focus on reducing violence against women and girls (VAWG), self defence classes for women are being offered to females aged 16 and over to improve their confidence in being able to keep themselves safe.

The scheme is run by Richard Ross of Simply Gym with the support of Metropolitan Police Service (MPS) and Thames Valley Police (TVP), which provide crime prevention advice and support after the classes.

The sessions last for 1.5 hours and are free of charge although advance booking is required. The first session

in Little Chalfont was held in the village hall on 22 January 2022, and there was an excellent turnout as can be seen from the picture below. There is a maximum of 40 participants per class.

During the class, Richard was assisted in his demonstrations of



various self defence moves by Lisanne Rice of the Metropolitan police, pictured right. Lisanne played the part of the 'baddie' while Richard

demonstrated various self defence strategies to counter different possible types of attack.

Everyone thoroughly enjoyed the session, and those there commented on how helpful they found the instruction. The participants had various reasons for attending the class, such as early morning dog walking, when not many people were around, and those who often jogged through the woods alone.

If you are interested in attending a future self defence class, please email Richard at rmross0404@gmail.com ■



Little Chalfont Farmers Market

A valuable local resource

As many of you will know Little Chalfont has its own farmers market, part of Thames Valley Farmers Markets, held in the village hall car park on the second Saturday of each month.

Most of the food and drink sold at the market is produced within a 30 mile radius of the market, which means that you can be sure you are buying products from the people who have grown, reared, baked and made them, all to the highest standards.

Buying at farmers markets helps to support local farmers and producers – there are no middlemen involved.

Here we profile two more individual regular stallholders:

Busy Bees Honey Suppliers

Busy Bees' honey making skills originate from years of experience, passed down from generation to generation in Moldova. Eduard and his wife Stela moved to the UK in 2000 and the company was founded in 2001.

Eduard started his honey making



career with only two beehives, as a hobby and to boost his family's good health.

At present Eduard and Stela are keeping beehives in Staines-upon-Thames and Maidenhead Holyport Farm. The honey is 100% pure and raw, as nature intended. No chemicals or antibiotics are used in the bees' management and the honey is extracted on the premises.

The bees are regularly checked for diseases and their care and food sources are exceptional; during the winter the honey is kept in the hives, so that the bees feed on the honey, not on sugar.

As well as honey, the company also produces mead. Mead is the oldest art of fermentation. It is also commonly known as honey wine and was the first alcoholic drink to be brewed, at 11.5% abv.

The ancient Greeks considered mead to be a drink that gods sent from heaven to earth!

Roger Crump Horticulture

Based in Hemel Hempstead, Roger started growing plants for sale in his garden and greenhouse in spring 2018 and the business grew to keep pace with demand.

He used to grow just orchids, but they took up so much time and effort that he

decided to diversify into more widely grown plants that would have a greater appeal to customers.

Roger now grows mostly hardy perennials and tropical looking plants like banana, canna lilies and colocasia – more commonly known as 'elephant's ears'. He can be found at the farmers market from May to October each year with his colourful display.



Two further stallholders will be featured in our Autumn 2022 newsletter. ■



Community improvement plan (CIP)

The Little Chalfont Community Improvement Plan (CIP) represents the views and aspirations of the community. All the current projects are joint initiatives between the parish council and the community association.



Dementia friendly village

We are delighted to report that the first stage of this initiative, the opening of Cafe 22 at St George's church hall, took place on 3 February 2022 and has run successfully every week since.

Cafe 22 is for those in our community with memory loss and their carers to enjoy, on a regular basis, a relaxed and social environment, but with arts and crafts and interesting activities available. Attendance is by invitation, so that the necessary care and attention can be provided.

For the time being, it is operating under the umbrella of the LCCA, which has secured funding from the Amersham and Villages Community Board, the Grant Foundation and Paradigm Housing Community Fund, to all of which we are very grateful.

It is also supported by the parish

council and has its own management committee. Within a few months, it is intended that the whole project will become a completely independent, not-for-profit organisation.

We are now looking to increase the number of guests, carers and trained volunteers, so if you would like to volunteer or attend, please contact Helen Tyers at 01494 762 395 or email goodneighbours@littlechalfont.org.uk



Climate change/environment

The first of planned regular environment cafes was held in the village hall on Saturday 19 March 2022.

It was well attended, reflecting the interest of the community, and many ideas were put forward to help decide on where we can all prioritise our efforts in this crucial area. Core topics of conversation were:

- Tackling issues with litter and rubbish;
- Transport, encouraging walking, cycling and reducing reliance on cars;
- Reducing energy use.

The key to progressing these will be the formation of a steering group. There is some tentative interest but

more residents are needed so please find out what might be involved by initially emailing environment@littlechalfont.org.uk.

A report with recommendations was put together after the first cafe and this was considered by the parish council and community association at their April 2022 meeting. Unfortunately the timing of these meetings meant that the outcome could not be known for this newsletter.

From what we hear of climate change activities elsewhere in the Chilterns, Little Chalfont is behind the curve so will need to get its act together. Succeeding in reducing emissions will never be enough and there are many other actions that are needed to be taken, all of which will help to achieve the targeted reductions.

The next meeting will be held on Saturday 5 June 2022.



Encouraging visitors

Progress is slow but the outline proposals are now being costed.

On the positive side, a grant has been secured by the LCCA that will make a good contribution towards the expected total costs of the project. ■

Little Chalfont Community Association news

LCCA website: www.littlechalfont.org.uk

Queen's Platinum Jubilee

Due to school holidays, your own celebrations and other circumstances, many people and clubs were unable to commit to a cultural event in the village on Saturday 4 June, to jointly celebrate the Queen's Platinum Jubilee. This idea will not, therefore, be taken forward.

Nevertheless, we would express the hope that our shops, cafes, restaurants and businesses will have their own initiatives over the Jubilee weekend of 4th to 6th June to help celebrate the Queen's remarkable achievement and that we will all approach the weekend as an opportunity to 'shop locally'.

Also, with fingers crossed for good

weather, we hope to see lots of street parties over that weekend and wish you all the best with the ones in which you are involved.

Village day cancelled

We are sad to say that there will again be no village day this year, as no one has been found to take on the task.

If you would wish this celebration of our community to return in 2023 and are willing to take on the organisation, perhaps with a small team to help, please let us know now, so that provisional plans can be made. Email chairman@littlechalfont.org.uk

Daffodils planted

The residents of Amersham Way decided in 2021 to reverse the gradual loss of daffodils on their green. Hundreds of daffodil bulbs were planted in the autumn (see picture) by the scouts and beavers, ending in the dark, (middle pic) and were added to later by the residents themselves (lower picture). Well done everyone. ■



About Little Chalfont Parish Council

Your parish councillors



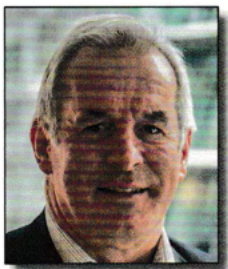
*Mike Crowe
Chairman*



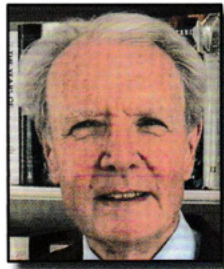
*Vinny Patel
Vice chairman*



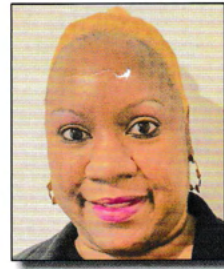
*Chris Ingham
Planning committee
chairman*



*Chris Holmes
Planning committee
vice chairman*



Brian Gallagher



Novia Henry-Ames



David Nussbaum



Doug Silverstone



*Janet Walford OBE
Newsletter editor*

Parish council meetings:

Parish council general meetings:

Usually held on the second Wednesday of each month, except for August, in Little Chalfont Village Hall in Cokes Lane, Little Chalfont, commencing at 7.30pm.

The meetings are always open to the public, so why not come along to a meeting and see your parish council in action? Local residents have the opportunity to express their views and to ask the council for support in relation to various matters.

Planning committee meetings:

Usually held every four weeks, starting at 7pm or 7.30pm – see website or notice boards for details.

The committee considers planning applications made for Little Chalfont and advises Bucks Council, the planning authority, of any local or community issues that it should take into account. You can make comments, then hear the committee's discussion.

Parish council office

The parish council office is located at the rear of the village hall in Cokes Lane.

Contact details for enquiries:

TELEPHONE: 01494 766655. If unattended, you may leave a message on the answerphone and we will respond as soon as possible.

EMAIL: clerk@littlechalfont-pc.gov.uk

OFFICE OPENING HOURS:

Monday – Friday, 9am – 12 noon.

COUNCIL WEBSITE: www.littlechalfont-pc.gov.uk



*Sallie Matthews
Parish clerk*



*Sam Butcher
Assistant clerk*



*Sharon Chapman
Accounts assistant*

Newsletter distribution

The parish council is indebted to Adrian Lockyer, membership secretary of the community association, for organising the distribution of the newsletters and to the volunteers who deliver them, ensuring that all homes and businesses in Little Chalfont receive a copy.

Publication date 13/04/22

Any comments or suggestions?

If you have any comments or suggestions to make about this newsletter or its contents, please contact the parish clerk on clerk@littlechalfont-pc.gov.uk. We welcome all feedback

Where to go for help:

Parish council: 01494 766 655

Bridleways; commons and open spaces; community transport schemes; community safety and crime reduction measures; events and festivals; footpaths; leisure facilities; litter bins; neighbourhood planning; street cleaning; tourism activities; traffic monitoring; village greens; residential street lighting, woodlands; youth projects.

Bucks council: 0300 131 6000

'A' road lighting; bus shelters; car parks; council tax collections; education; fire and public safety; fly tipping; housing; libraries; planning applications; public toilets; recycling; rubbish collection; trading standards; transport; social care; waste management.

Other contacts:

Police emergency: 999
Police non emergency: 101
NHS healthline: 111
Banks fraudline: 159
Unsolicited marketing calls: 0303 123 1113
Illegal parking: 0333 121 0031
Dial a ride: 01494 766 123
Helping hand team: 01296 531 151
Helping Hand emergency: 0800 999 7677