

# Little Chalfont Community Association

LCCA website: [www.littlechalfont.org.uk](http://www.littlechalfont.org.uk)

## Dates for your diary

Food donations to Chiltern foodbank  
 ● 9 December 2023 – Christmas hamper appeal  
 ● 13 January 2024 – usual monthly food priorities  
 Drop off at the gazebos in the village centre (Cytiva car park and Chenies Parade) between 9am – 12noon

## Christmas lights

The lights in the village will be switched on from Sunday 26 November 2023, but will remain lit each day for a shorter period than in the past.

## Remembrance Day refreshments

These were provided by Little Chalfont WI in the village hall after the service on Sunday 12 November 2023. All donations will go to the British Legion.

## WI Christmas market

This will be held in the village hall on Saturday 25 November 2023 between 11am – 2pm.

## Carols on the green

Will be held on 9th December 2023 commencing at 11am on the village green.

## Community improvement plan



**Dementia friendly villages**  
**Café 23**, the new dementia/memory impairment café for Amersham, has made an excellent beginning, borne up by the enthusiasm of the volunteers and the leadership of Lynne Remick, who is experienced in this field.

Funding to reach the estimated annual target has nearly been achieved, encouraged, by very generous donations from the Grant Foundation, Rotary, and Amersham Community Board.

**Café 22** continues to be well attended, now with 18 couples: guest and carer. The Little Chalfont Area Dementia Support (LCADS) committee, volunteers and carers will be running a coffee morning in the village hall in early spring.

This event was very well received this year, raising nearly £1,000, and the money will go towards both cafes. We are also running a Christmas raffle and other fundraising events.

Both cafes are incorporated in LCADS

and we have achieved charitable status, mainly through the hard work of our chairman, Roger Funk, our treasurer and trustees.

## Little Chalfont Library

The library is a warm and welcoming space in the community. Do pop in to see what it has to offer and, in particular, join with others at our **community cafe** every Wednesday from 3pm – 4:30pm. Come along for free tea/coffee, cake and a chat – everyone is welcome.



**Nature friendly village**  
 After a beautiful display of wildflowers over the summer, the four patches have been prepared and we are awaiting better weather before sowing the seeds for next spring.

Finance for the seeds is provided by the LCCA and volunteers do the planting and caring for the flowers. ■

## New village hall Update

Based on recent information from the architects, the parish council has given the green light to continue the community centre project, which is now moving into the pre-planning stage.

The scope of the project is to replace the village hall with a purpose built

community centre and, once the design has been agreed, there will be a consultation with the community about the centre and its benefits.

The original intention was to include Little Chalfont Community Library within the overall scheme. However, the architects have advised the us that, by doing so, the potential build cost would be considerably higher than the proposed budget. Therefore the library will continue in its present building,

adjacent to the current village hall and new community centre.

Graham Yellowley, library chairman, said that it would have been good to be part of the scheme. However, the library building is in good shape and the proximity and cooperation between the library, parish council and community centre bodes well for these bodies to continue being a vital hub for Little Chalfont and the local area. ■

## Local MP visits library

Local MP Sarah Green (front right in pic) dropped into Little Chalfont Community Library on Thursday 19 October 2023 to lend her support and discover more about what the library has to offer the local community.

She spent time listening in at children's storytime, met Jamie Reeve at his digital skills drop-in

clinic, spoke to library users, and talked about how the library runs with managers Wendy Yellowley and Geraldine Newman and longstanding volunteer Jenny Gorsuch.

She discussed the library's funding and future plans with chairman Graham Yellowley and treasurer Julia



Hughes-Morgan over a cuppa and even managed to find time to add a few pieces to our current jigsaw! ■

# About Little Chalfont Parish Council

## Your parish councillors



Vinny Patel  
Chairman



Brian Gallagher  
Vice chairman



Chris Holmes  
Chairman, planning committee



David Nussbaum,  
Vice chairman,  
planning committee



Vic Davies



Novia Henry-Ames



Kris Murali



Janet Walford OBE  
Newsletter editor

## Newsletter distribution

The parish council is indebted to Adrian Lockyer, membership secretary of the community association, for organising the distribution of the newsletters and to the volunteers who deliver them, ensuring that all homes and businesses in Little Chalfont receive a copy.

Publication date 13/11/23

## Where to go for help:

**Parish council: 01494 766 655**  
 Bridleways; commons and open spaces; community transport schemes; community safety and crime reduction measures; country footpaths; events and festivals; leisure facilities; litter bins; neighbourhood planning; street cleaning; tourism activities; traffic monitoring; village greens; residential street lighting, woodlands; youth projects.

## Bucks council: 0300 131 6000

'A' road lighting; bus shelters; car parks; council tax collections; education; fire and public safety; fly tipping; housing; highway surfacing and potholes; highway pavements; libraries; planning applications; public toilets; recycling; rubbish collection; trading standards; transport; social care; waste management; .

## Other contacts

Police emergency: 999  
 Police non emergency: 101  
 NHS healthline: 111  
 Banks fraudline: 159  
 Unsolicited marketing calls: 0303 123 1113  
 Illegal parking: 0333 121 0031  
 Dial a ride: 01494 766 123  
 Helping hand team: 01296 531 151  
 Helping Hand emergency: 0800 999 7677  
 Citizens Advice Bureau: 0808 278 7938

## Parish council meetings

### Parish council general meetings:

Usually held on the second Wednesday of each month, except for August, in Little Chalfont Village Hall in Cokes Lane, Little Chalfont, commencing at 7.30pm.

The meetings are always open to the public, so why not come along to a meeting and see your parish council in action? Local residents have the opportunity to express their views and to ask the council for support in relation to various matters.

### Planning committee meetings:

Usually held every four weeks, starting at 7pm or 7.30pm – see website or notice boards for details.

The committee considers planning applications made for Little Chalfont and advises Bucks Council, the planning authority, of any local or community issues that it should take into account. You can make comments, then hear the committee's discussion.

## Parish council office

The parish council office is located at the rear of the village hall in Cokes Lane.

Contact details for enquiries:  
**TELEPHONE:** 01494 766655. If unattended, you may leave a message on the answerphone and we will respond as soon as possible.

**EMAIL:** [clerk@littlechalfont-pc.gov.uk](mailto:clerk@littlechalfont-pc.gov.uk)

**OFFICE OPENING HOURS:**  
 Monday – Friday, 9am – 12 noon.

**COUNCIL WEBSITE:** [www.littlechalfont-pc.gov.uk](http://www.littlechalfont-pc.gov.uk)



Sallie Matthews  
Parish clerk



Sam Butcher  
Assistant clerk

## Any comments or suggestions?

If you have any comments or suggestions to make about this newsletter or its contents, please contact the parish clerk on [clerk@littlechalfont-pc.gov.uk](mailto:clerk@littlechalfont-pc.gov.uk). We welcome all feedback

# LITTLE CHALFONT PARISH COUNCIL

Newsletter – Autumn 2023



## Speeding and parking problems Anti-social attitudes persist

Despite the efforts of various initiatives to try to reduce the incidence of speeding in Little Chalfont, some drivers continue to flout the speed limits, endangering other motorists, cyclists and pedestrians.

One of these initiatives is the MVASs (movable vehicle activation signs) that the parish council has installed at various speeding black spots where speeding is a perennial problem.

The main purpose of these signs is to remind drivers of the speed limit in an effort to get them to slow down.

Here are the latest figures obtained from drivers along two busy roads during the summer and early autumn:

### ● White Lion Road towards Amersham, April – July 23

Up to 33mph	92,763	52.0%
34 – 40mph	55,431	31.0%
41 – 45mph	21,624	12.0%
46 – 50 mph	6,306	3.5%
51 – 60mph	2,130	1.2%
61 – 70mph	181	0.1%
71mph+	5	
Total	178,440	

### ● White Lion Road, Amersham towards Little Chalfont

Up to 33mph	115,638	64.7%
34 – 40mph	44,616	25.0%
41 – 45mph	13,743	7.7%
46 – 50 mph	3,462	1.9%
51 – 60 mph	1,167	0.65%
61 – 70 mph	129	0.07%
71mph+	4	
Totals	178,759	

The figures for Nightingales Lane, to and from Little Chalfont village, taken in July - September 2023, tell a very similar story, with some alarming figures:

### ● Nightingales Lane from junction with Cokes Lane towards Chalfont St Giles, July – Sept 23

Up to 33mph	79,650	96.1%
34 – 40mph	2,730	3.3%
41 – 45mph	432	0.5%
46 – 50mph	54	0.07%
51 – 60mph	48	0.06%
61mph+	0	
Totals	82,914	

### ● Nightingales Lane towards Cokes Lane junction

Up to 33mph	45,166	41.3%
34 – 40mph	39,603	36.3%
41 – 45mph	18,566	17.0%
46 – 50mph	4,515	4.13%
51 – 60mph	1,281	1.17%
61 – 70mph	106	0.10%
71 – 80mph	8	0.01%
Totals	109,245	

The various speed bands have been recently recalibrated. As no speed measurement system can be 100% accurate, current legislation allows drivers to exceed the speed limit by 10%, hence drivers travelling at 33mp in a 30mph zone are given the benefit of the doubt. Therefore the initial band is now shown at up to 33mph.

Although the figures show that the majority of drivers adhere to the speed limit on our roads where the MVAS is sited, in some cases this far from the case.

This is especially true when looking at speed figures for the stretch of Nightingales Lane towards the junction with Cokes Lane.

Here the total of drivers exceeding the speed limit is almost 60%, (with 1,395 driving at over 50mph),



Blocking dropped kerbs could lead to a fine of £90

greatly exceeding the 41% that stick to the rules. This could be explained by drivers leaving a 40mph zone and failing to notice the 30mph zone on the approach to the Cokes Lane junction, *but it is no excuse.*

The two MVASs have now been moved to Bell Lane.

### Inconsiderate parking

We have highlighted this problem in the past but unfortunately the continued pressure on parking in the village has led to frequent inconsiderate parking. This includes blocking dropped kerbs, parking in disabled spaces when not eligible, and completely blocking pavements.

Blocking a dropped kerb could lead to a penalty charge of £90. This does not deter some people, however – our picture above shows a van completely blocking the dropped kerb opposite Chenies Parade.

The driver of this van actually left his vehicle to shout abuse at the councillor who took this picture! ■



## Nature park news

### Hard paths finally laid

After many years and much effort by the nature park trustees, sufficient funds were raised to enable the laying of hard paths in the nature park, which started at the end of August.



The new paths took about five weeks to complete, and our pictures show an example of the grass paths before the work started (top), and what they look like now that the new paths have been laid.



Now that the new paths have been laid, the park will be accessible to everyone – before, wheelchairs and other mobile aids users, plus those with pushchairs, would have had difficulty with the grass paths in the winter and in wet conditions, so we are hoping that everyone will be able to take advantage of all the benefits that the nature park has to offer visitors.

These include lots of wildflowers in the spring, plenty of birdlife too, a

picnic area and children's play area with a wooden climbing structure.

There are plenty of seats, and wooden sculptures to spot throughout the park, plus a woodland walk, and a wooden climbing frame for the young.

Notices at the entrance to the park are regularly updated by volunteers to show what can be seen in the park as the seasons change.

Please note that **cycling is not permitted** in the park, nor is the use of scooters. Dogs are also not allowed, as they can disturb the wildlife – there are plenty of other local areas to exercise your pooch! The whole nature park area is focused on nature, for all to enjoy in peace and quiet – let's keep it that way!

We hope you will continue to enjoy nature in this wonderful open space throughout the year, even more so now that the paths have been laid! ■

## New councillors

### Two vacancies filled

We are delighted to announce that two new councillors, Vic Davies and Kris Murali, have been co-opted onto Little Chalfont Parish Council with effect from the October 2023 council meeting.

The vacancies arose from the recent departure of three parish councillors who had served long terms on the parish council.

**Vic Davies** has lived in Little Chalfont since 1997. As a keen walker he is particularly interested in maintaining and improving access to the surrounding countryside and improving the facilities for sports participation and children's play areas.

**Kris Murali** moved to Little



Vic Davies



Kris Murali

Chalfont in 1996. He is keen to maintain the essential character and family friendly nature of the village with good access to open spaces and play areas.

If you would like to meet the new recruits, and/or apply for the remaining vacancy on the parish council, do come along to our next meeting, which will be held on Wednesday 13 December 2023. ■

## From the chairman



Hello everyone.

The summer, which was a wet one, is over now.

Autumn is nearly over now, and has also been wet so far. Thankfully, the autumn colours are appearing all around us, actually appearing brighter in the rain!

During our damp summer, the flags went up in the village for the King's Coronation, which reflected the involvement of the village in this once-in-a-lifetime celebration.

I am delighted that we have been able to co-opt two new councillors (see story at the foot of this page).

For the whole of the summer months the parish council was short of three councillors. The vacancies arose due to the departure of councillors last year, having served long terms of office at the parish council.

There is still a vacancy for one more councillor, to bring us up to full complement. If you are interested in helping to shape the future of Little Chalfont by joining the parish council, we would be pleased to hear from you! Why not come along to one of our meetings – always open to the public – to see for yourself the contribution that we make to the village.

I would like to thank the fellow councillors for their cooperation over the past year in keeping the parish council operating smoothly during the shortage of personnel.

During the past six months, Transport for Bucks tarmacked several roads in the village, which was a great improvement. There are still a few roads to be tarmacked, which hopefully will happen soon. Sadly, one drawback of the smoother roads is that speeding in the village has increased (see report on front page).

Village day was a great success this year, helped in no small way by some welcome sunshine!

Lastly, before I put my pen to rest, I have to inform you, with heavy heart, that the memorial stone on the triangle on the village green was defaced for the third time this year.

The stone was installed in memory of *all* those who gave their lives in search of peace. Such sad vandalism is incomprehensible. A new plaque has now been installed on the stone.

Vinny Patel

## Westwood Park news

### New football goalposts installed

After what can only be described as a very strange summer, weather wise, autumn made an appearance in late September and the seasonal leaf fall commenced. For some, this means the start of the football season and weekly visits to Westwood Park.

An unusually high rainfall in July and August, plus what can only be described as moderate temperatures, Westwood Park comes into the autumn/winter in great condition. This, hopefully, provides ideal conditions for enjoyable games of football.

The parish council has been busy over the summer period and replaced



three sets of goalposts that were starting to show signs of age. We hope that all those participating in football matches during this and future seasons will look after the goalposts so that we can get many years' use from them.



### Parking a problem

Now that the football season is in full swing, it's great to see so much activity in the park on Saturday mornings. However, parking has continued to prove a challenge, with overspill often occurring along Chenies Avenue (see pic above) and Beechwood Avenue.

Inconsiderate parking along these roads is a potential hazard to

**Little Chalfont Farmers Market**

**For winter 23/spring 24, the farmers market will be held in the village hall car park from 9am-1pm:**

**Saturday 9 December 2023**  
**Saturday 13 January 2024**  
**Saturday 10 February 2024**  
**Saturday 9 March 2024**

**If you are interested in taking a stall at the farmers market, please contact the organiser at [info@tvfm.org.uk](mailto:info@tvfm.org.uk) or call 01235 227 266.**

**For the craft fair please contact Zoe at [zobiine@hotmail.com](mailto:zobiine@hotmail.com)**

## Forever Cycling

### Great way to keep fit!

Forever Cycling is a new community initiative that provides those with lower mobility with an opportunity to be active and socialise.

During the activity, you use the set of stationary floor pedals to pedal at your own pace, helping strengthen and improve the flexibility in your legs and hips. Whilst peddling away, a virtual tour of one of its world locations is projected up on the big screen (see picture).

The virtual tour could be riding through New York City on an open-topped bus, cycling past the Eiffel Tower, weaving through the streets

## Briefly...

### Free Christmas parking

The parish council is pleased to announce that it has agreed five Saturdays in the run up to Christmas where parking in Snells Wood car park will be free of charge.

These are as follows:

- 25 November
- 2 December,
- 9 December,
- 16 December
- 23 December

The Cytiva front car park will also be available as usual over the weekends.

### GE plants new beech hedge

GE has removed the blue hoardings that surrounded its site on White Lion Road and replaced them with a beech hedge and a grassed area in the front, as shown in our picture.



pedestrians, especially young children. The parish council asks that park users consider ways to reduce car usage by car sharing, walking, or cycling when accessing the park.

However, if car use is unavoidable, please ensure that cars are parked in such a way to minimise the impact on pedestrians and nearby residents. ■



Buckinghamshire, with many successful classes running across the county.

Locally, the sessions are held every other Tuesday at Little Chalfont Village Hall, 1:30 – 2:30pm. The cost is £4 per session, which can be paid in cash on the day.

If you would like to attend one of these sessions, please contact Forever Cycling on 07538 706560, or email [adam.howard@aitc.org.uk](mailto:adam.howard@aitc.org.uk) to let them know if you wish to attend. ■

## Remembrance Day service

### Large turnout for solemn occasion

Wet weather meant that the organisers had to move the Little Chalfont Remembrance Day service from the village green to the village hall.

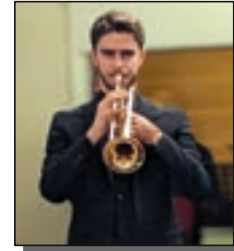
There was an excellent turnout of local residents, pictured right. The service was joined by members of the scouts and guides movements, with raised flags and colours parading through the village.

The service was conducted by the Reverend Adam Wells, minister of the Little Chalfont Methodist Church, part

of the Methodist Church Amersham Circuit.

The Chesham Wind Band provided the music to accompany the hymns, and soloist Ryan Bunce (pictured) played the Last Post to mark the two minutes' silence at exactly 11am, and flags were lowered in respect and remembrance.

The sacrifices of generations who



of the Methodist Church Amersham Circuit.



fought and died in pursuit of peace were recalled. The Exhortation was recited by Mike Crowe, former chairman of the parish council, and Brenda Johnson read the poem 'In Flanders Field'. Bible readings were given by Mike Crowe and Phil Chapman.

Wreaths were presented by Vinny Patel, chairman of the Little Chalfont Parish Council; Martin Tett, local councillor and leader of Buckinghamshire Council, on behalf of Buckinghamshire Council; and members of the uniformed services.

Because the service was moved to the village hall this year, the wreaths could not be laid at the memorial stone to the



The Chesham Wind Band

fallen, on the village green during the service, but were moved there after the service when the weather had cleared.

First to lay a wreath was William Laing, RN, retired, (pictured here) to remember the Royal Navy colleagues with whom he served in the 60s and 70s. ■



William Laing, RN, laying wreath on behalf of the Royal Naval Association

## Little Chalfont Farmers Market

### A valuable local resource

As many of you will know Little Chalfont has its own farmers market, part of Thames Valley Farmers Markets, held in the village hall car park on the second Saturday of each month.

Most of the food and drink sold at the market is produced within a 30 mile radius of the market, which means that you can be sure you are buying products from the people who have grown, reared, baked and made them, all to the highest standards.

Buying at farmers markets helps to support local farmers and producers – there are no middlemen involved.

Here we profile another individual regular stallholder.

### The Marlow Cheese Company

Based in the picturesque town of Marlow, the family-run Marlow Cheese Company prides itself on working with local dairy farmers, allowing it to source its milk locally to create its cheeses.

It was started in 2016 by Lynda Hill who, after a lifetime of mundane office and retail jobs and a serious health scare, decided to follow her dream to become a cheese maker.

She attended an introductory cheese course in 2015 at the Artisan School of Food in Nottinghamshire.

Here she was introduced to the handcrafted production of 'real' cheese, and afterwards was determined that Buckinghamshire would have an artisan cheesemaker to call its own!

Lynda kept things local and high quality and approached her local dairy farm, owned by the Lacey family in Lane End, Buckinghamshire.

Their 100% pure Guernsey herd still produces milk like 'the old days', where the cream is on the top! This milk contains three times as much omega 3 as other milks and contains



beta-carotene – a source of vitamin A – creating a lovely golden colour. Sadly, Lynda passed away last year and the company is now run by her husband James (pictured above) and daughter Chloe.

Its 'Chiltern Cloud', a Manchego-style hard cheese, made from locally sourced ewe's milk, has won accolades in the Artisan Cheese Awards.

In 2021 it won gold in the best vegetarian cheese category, and silver for best new cheese. It also won silver in the vegetarian cheese category in 2022.

Its stall in the local farmers market carries a range of both its hard and soft cheeses and you can sample them before you buy. ■